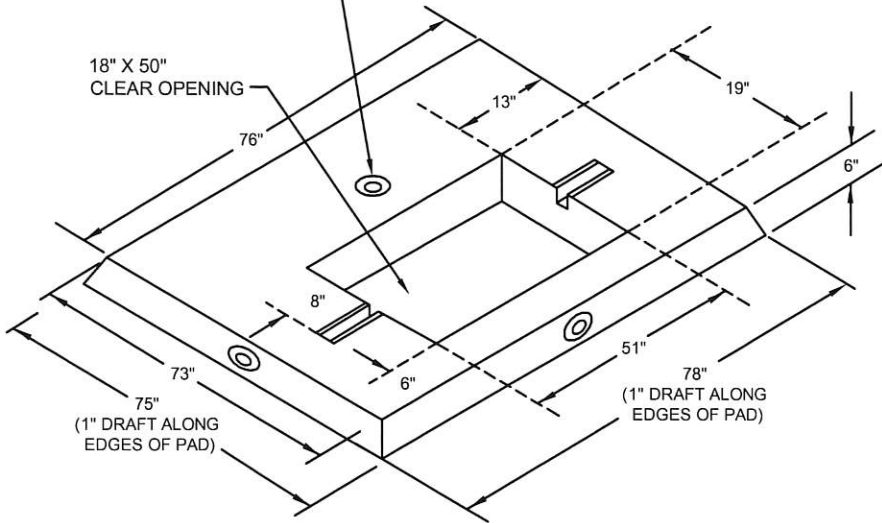
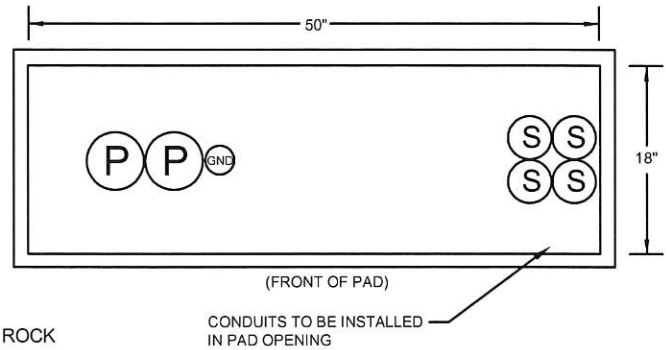


TRANSFORMER PAD

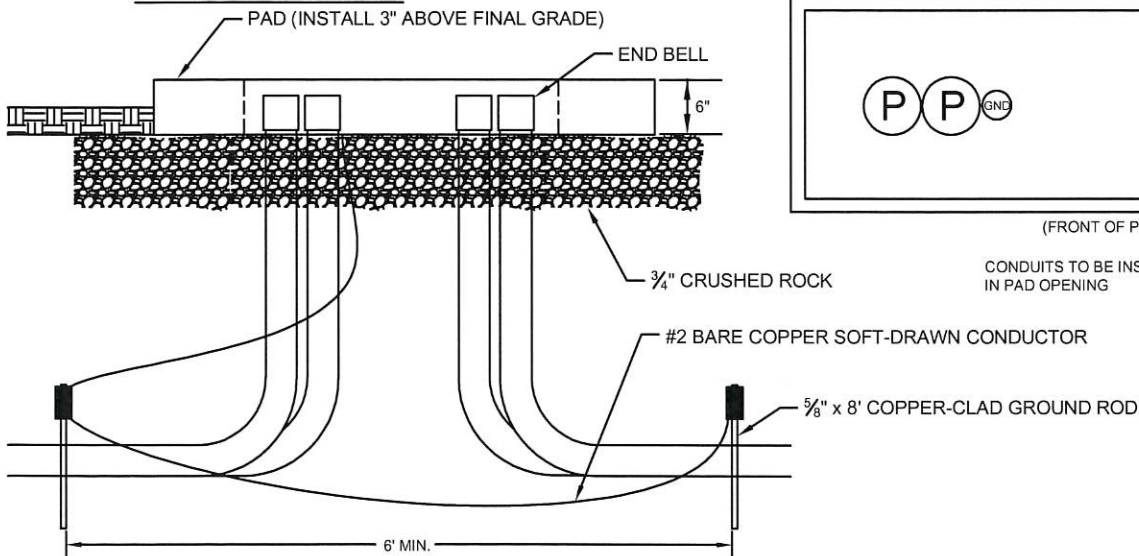
1" LIFTING INSERT (ALSO ONE IS
LOCATED ON EACH SIDE OF PAD)



CONDUIT TOP VIEW

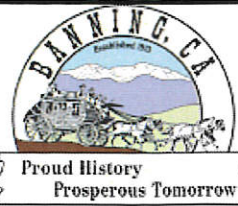


CONDUIT SIDE VIEW



NOTES:

1. LOCATE PAD AS DIRECTED BY C.O.B. ELECTRIC UTILITY.
2. INSTALL GROUNDING SYSTEM PER "SIDE VIEW" DETAIL. GROUND WIRE MUST BE #2 BARE COPPER SOFT-DRAWN CONDUCTOR UNLESS OTHERWISE SPECIFIED ON PLANS. 30' OF GROUND WIRE IN DIRECT CONTACT WITH EARTH MAY BE SUBSTITUTED FOR GROUND RODS UPON APPROVAL OF C.O.B. ELECTRIC INSPECTOR. LEAVE 10' OF GROUND WIRE SLACK IN BOTTOM OF HANDHOLE. USE EXOTHERMIC WELDING TO MAKE ALL CONNECTIONS. COMPRESSION CONNECTORS MAY BE USED ONLY WHEN DONE BY ELECTRIC UTILITY.
3. INSTALL A MINIMUM 8" OF 3/4" CRUSHED ROCK UNDERNEATH BOTH THE HANDHOLE AND PAD.
4. INSTALL END BELLS AND EXPANDABLE RUBBER PLUGS ON EACH EXPOSED CONDUIT. PRIMARY AND SECONDARY CONDUITS MUST BE GROUPED TOGETHER ON OPPOSITE SIDES PER DETAIL ABOVE.
5. INSTALL A TEMPORARY BOLT-DOWN 5/8" PLYWOOD COVER ABOVE PAD OPENING IMMEDIATELY AFTER COMPLETING PAD INSTALLATION.
6. IF REQUIRED BY C.O.B. INSPECTOR, INSTALL PROTECTIVE BARRIERS PER SD #600-06.
7. PROVIDE UNOBSTRUCTED SPACE CLEARANCES AROUND PAD PERIMETER PER SD #600-05.
8. IN SOFT SOILS AND AT DISCRETION OF C.O.B. ELECTRIC INSPECTOR, 1-SACK SLURRY MAY BE REQUIRED UNDER THE PAD. SLURRY MUST BE 12" DEEP AND EXTENDING 12" BEYOND THE SIDE EDGES OF PAD.



REVISED: 08/31/2016

APPROVED: *[Signature]* 8-31-16

STANDARD DRAWINGS

PRECAST CONCRETE PAD
THREE-PHASE TRANSFORMER

SD

600-62